

MS-DMT Mac OS X Installation Using WineSkin

MS-DMT is natively written for Windows; however, with a little work, you can get it to work on your Mac.

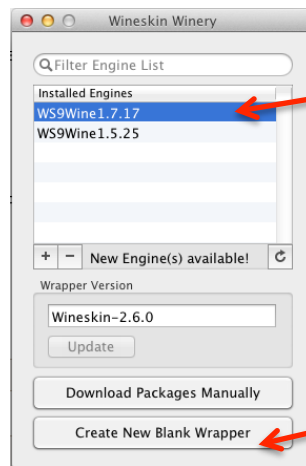
DISCLAIMER: I ACCEPT NO LIABILITY FOR YOUR SYSTEM OR ANYTHING ASSOCIATED WITH YOUR SYSTEM. IN ALL INSTANCES, YOU SHOULD HAVE A GOOD BACKUP IN CASE SOMETHING GOES AWRY. I HAVE FIGURED OUT HOW TO DO THIS FOR MY SETUP. ALL SETUPS ARE DIFFERENT AND I AM NOT A WINE “GURU.” WHAT I HAVE FOUND WORKS FOR MY SETUP MAY NOT WORK FOR YOUR SETUP. I HAVE DONE THIS A COUPLE OF TIMES AND IT WORKS WELL FOR ME. YOUR MILEAGE MAY VARY.

I will be showing how to install using WineSkin, a WINE package for Mac.

If you haven’t already, now is a good time to download MS-DMT.

After reading this page, <http://wiki.winehq.org/MacOSX>, follow the instructions in the installation section for WineSkin. There are also instructions on how to uninstall the WINE package you install in case you need them.

Once WineSkin is installed, start WineSkin Winery, select the installed engine you want to use, and click “Create New Blank Wrapper.”



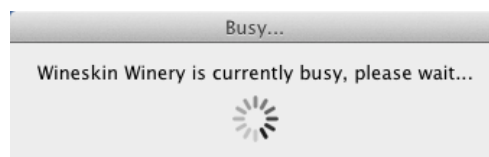
At the next window, select a name for your wrapper. For the purposes of this document, I will naming mine “MS-DMT v1.01 Build 1.0.1.0 Test.” Click OK.



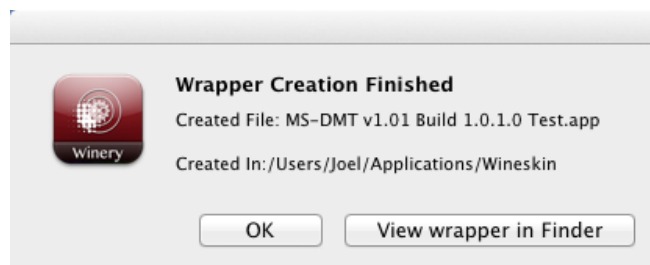
You may get a few windows pop up. One will tell you it's working on the wrapper. Another window will pop up telling you that WINE is being configured. Yet another may pop up asking you if you want to allow incoming access connection for WineskinX11. I click “Allow,” but you may have a need to “Deny” this. I don't know, it is up to you. Read the disclaimer though.



The “Busy...” window:



When it's all said and done, you will be shown this window:

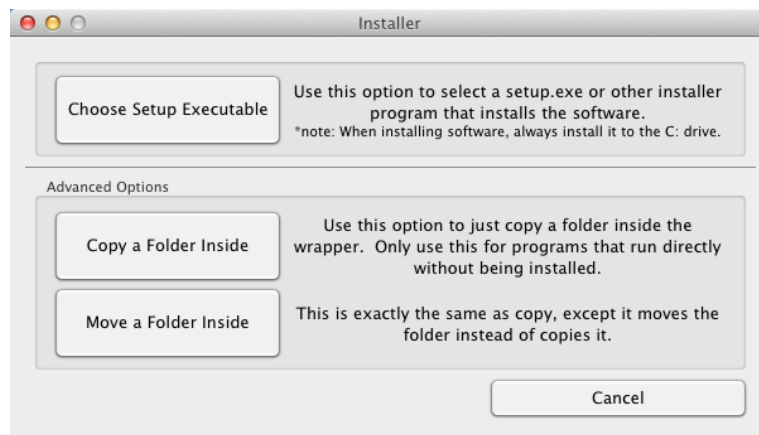


Click “View wrapper in Finder.” Double-click the new WineSkin Winery Wrapper. It will be titled what you named it previously.

In the next window that appears, click “Install Software.”



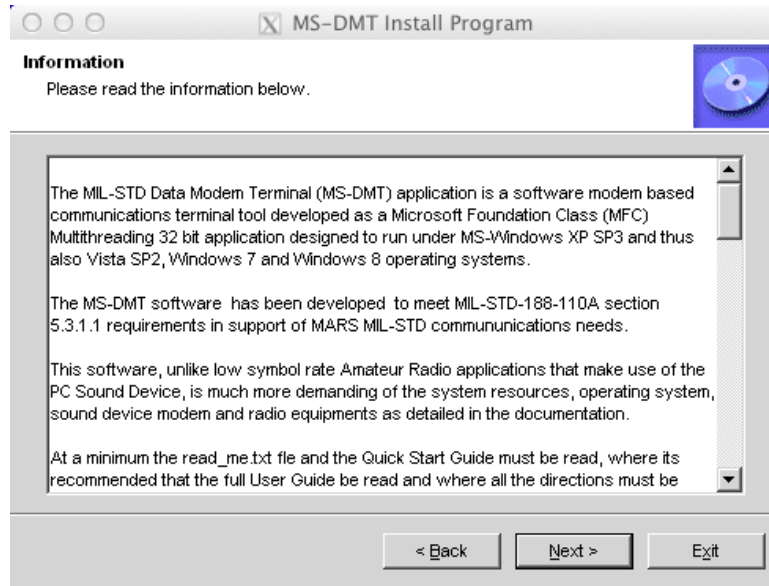
Click “Choose Setup Executable.”



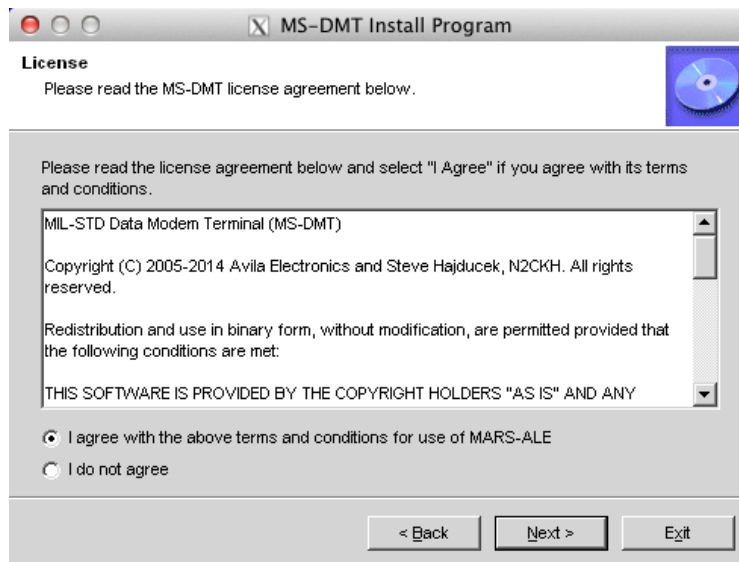
Go to the location where you downloaded and saved and unzipped MS-DMT and double-click “install.exe.” Once the install starts, I have found that I have to click somewhere on the screen for the “Install Program” dialog to show. I don’t know why or what causes this. If you don’t see the “Install Program” dialog, just click one time somewhere on the screen. Once you get the dialog, click “Next >”



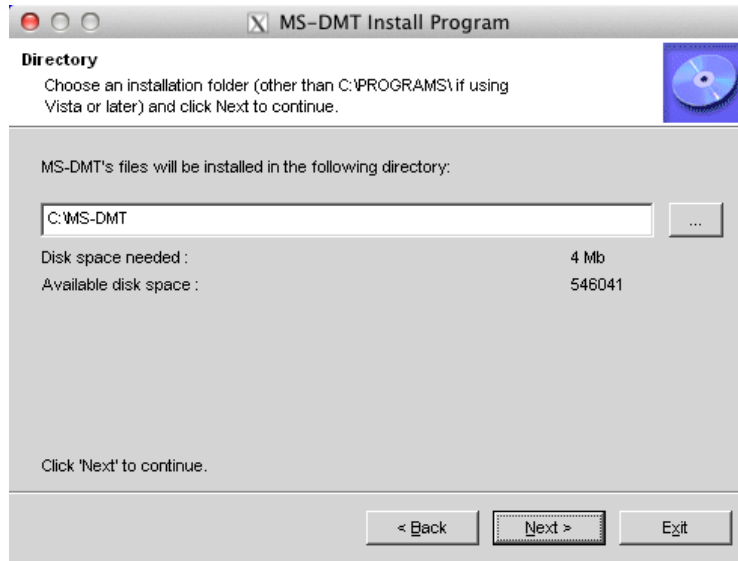
Read the text at the “Information” window and click “Next >”



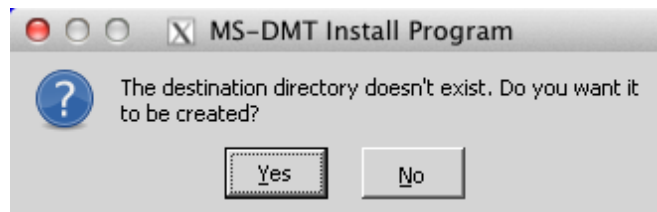
Agree with the license terms and click “Next >”



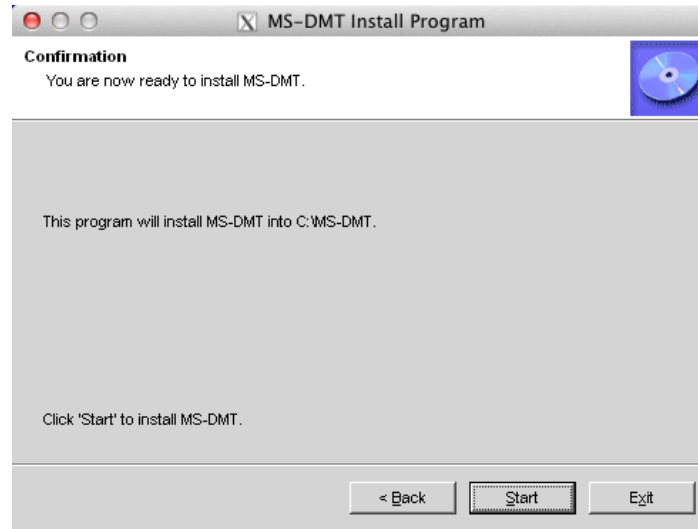
Accept the default directory and click “Next >”



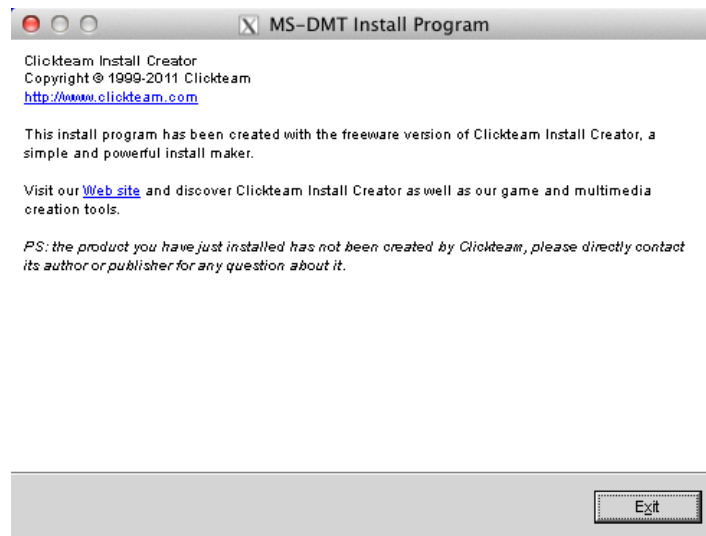
If asked, have the program create the directory by clicking “Yes.”



At the confirmation window, click “Start.”

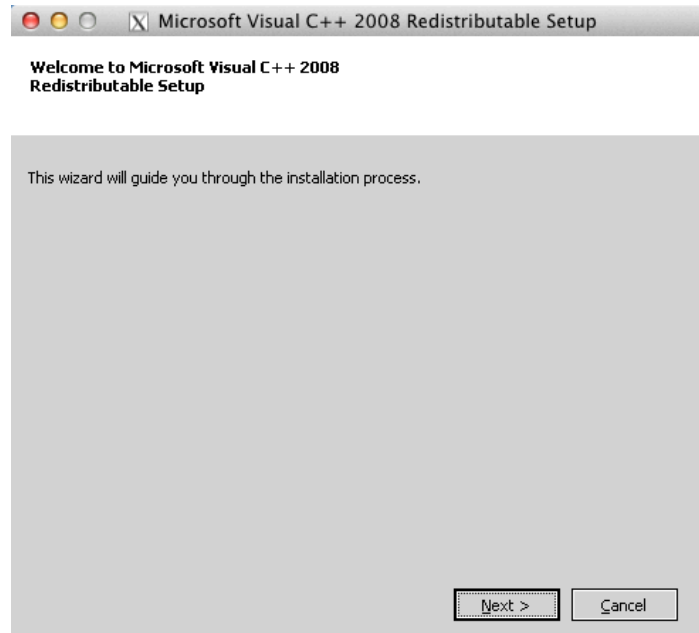


At the end window, click “Next >”

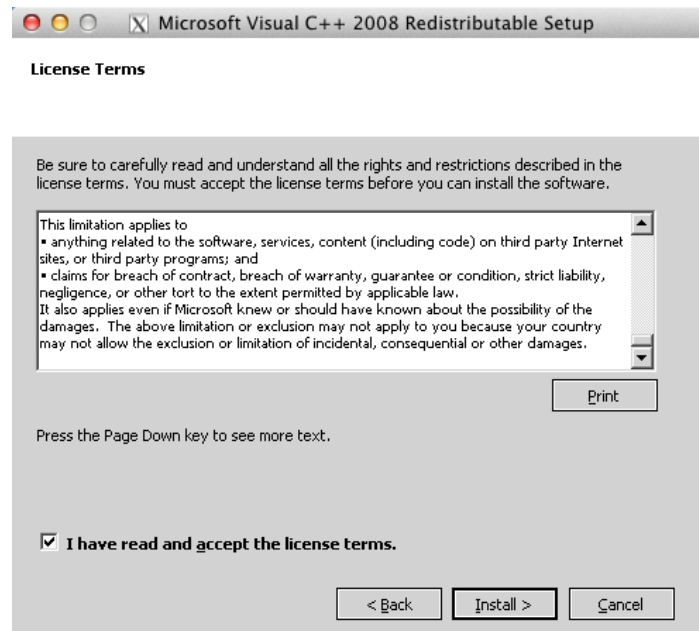


Click “Exit.”

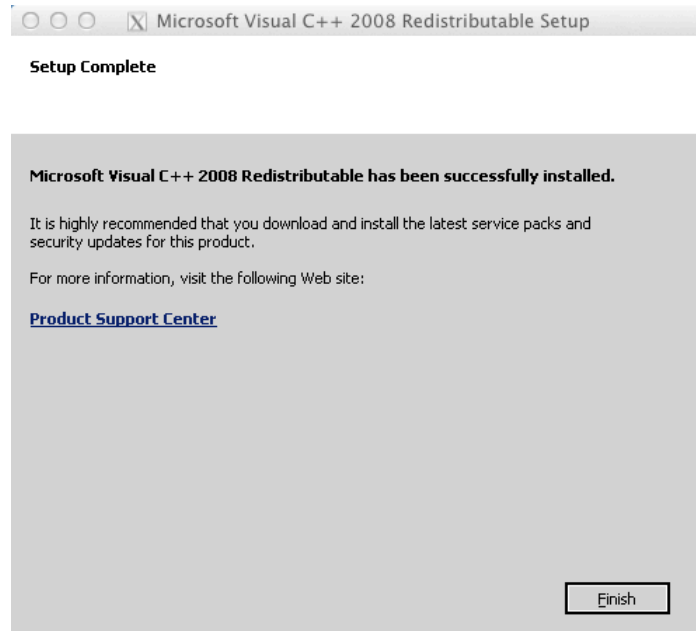
You will now go through the process of installing the Microsoft Visual C++ 2008 Redistributable Setup. Click “Next >”



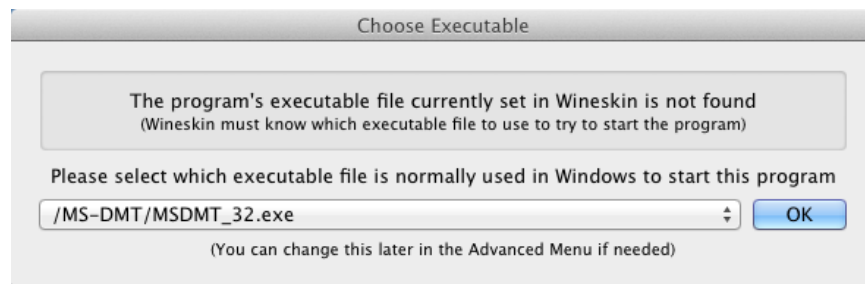
Read and accept the license terms. Then click “Install >”



Click “Finish.”



Choose the program’s executable file. If it is not what shows up in the drop down box, click the drop down box and look for it. Click “OK.”



You may want to go through the “Set Screen Options” or the “Advanced” options. If not, just select “Quit.”



Now, with the Finder window still open from a previous step, once again, double-click the MS-DMT application.

At this point, you need to set up your sound card and CAT control. Select the CAT COM PORT you want to use and remember it. You will set up a symbolic (sym) link in a following step.

For the uninitiated, a sym link is just a “shortcut.” In this case, we will be creating a “shortcut” to a COM port for a Windows program to use through WINE. For the purposes of this document, I am assuming you are using a USB-to-serial adapter. For a good one, go to GearMo. They sell both a USB-to-2port and -4port serial adapter.

The first thing you will want to do is start the Terminal program.

At the prompt, you want to “list” the /dev directory. To do this, type:

ls /dev

You are looking for something like this:

tty.usbserial-FTWU1P3UA

OR

cu.usbserial-FTWU1P3UA

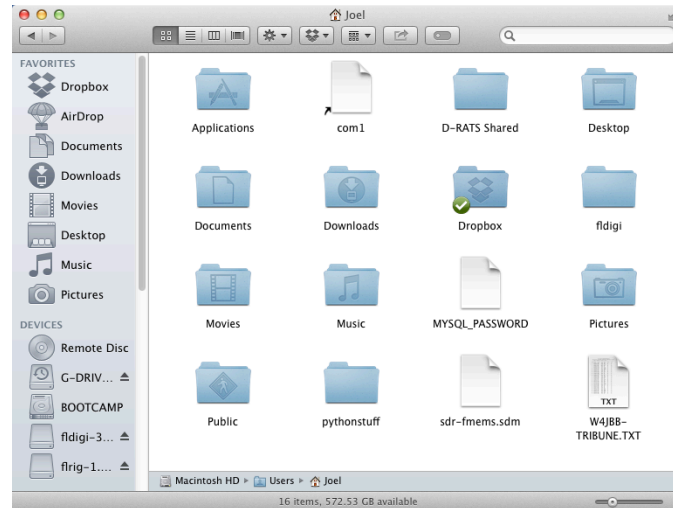
For me, the tty.usbserial-FTWU1P3UA worked.

Write this down.

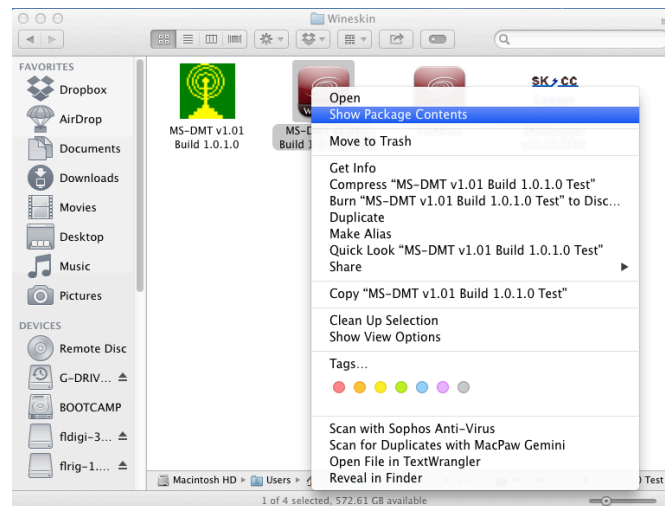
Staying in your home directory (and using my USB-to-serial port from above as the example), type:

ln -s /dev/tty.usbserial-FTWU1P3UA com1

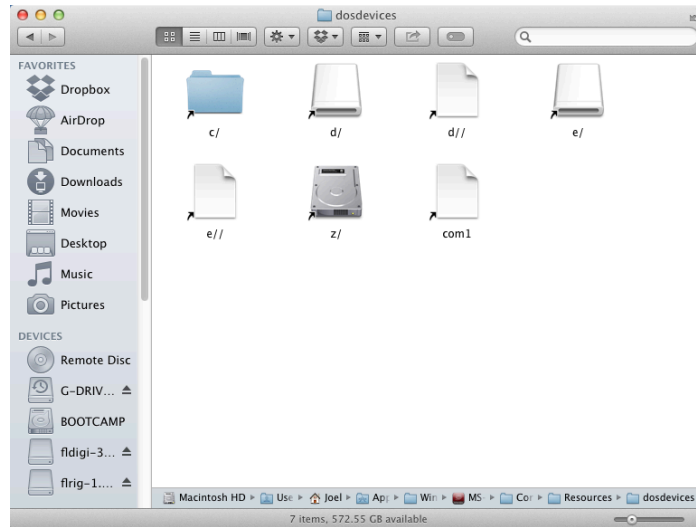
This will create a shortcut in your home directory called com1.



Now, copy the com1 shortcut you just created and place it inside the /dosdevices folder of the MS-DMT wrapper you created previously. To do this, right-click on the wrapper and select “Show Package Contents.”



Drill down to /Contents/Resources/dosdevices. Paste the com1 shortcut to /dosdevices.



If you left MS-DMT running during all this, exit the program (after you have setup all the hardware parameters [i.e. PTT settings, Rig, CAT COM PORT, sound card, etc.]). Restart MS-DMT and test what you have done. If you did it correctly, you should transmit an M110A signal.